

10MHz Master Clock ver. 1.9

(C) 2015 Miedema Geluidstechniek

IN OUT

X01
OCXO 8663
Oscilloquartz 8663-XS

Vref

Vc in

Gnd

Out

R19 1k
R17 1k8
R10 1k

LED's
PWR +
OVEN + WARM

R8 5k62
TP1
Ucv
R6
5k
R9
17k4
Freq. trim

A15,2mm

LM317

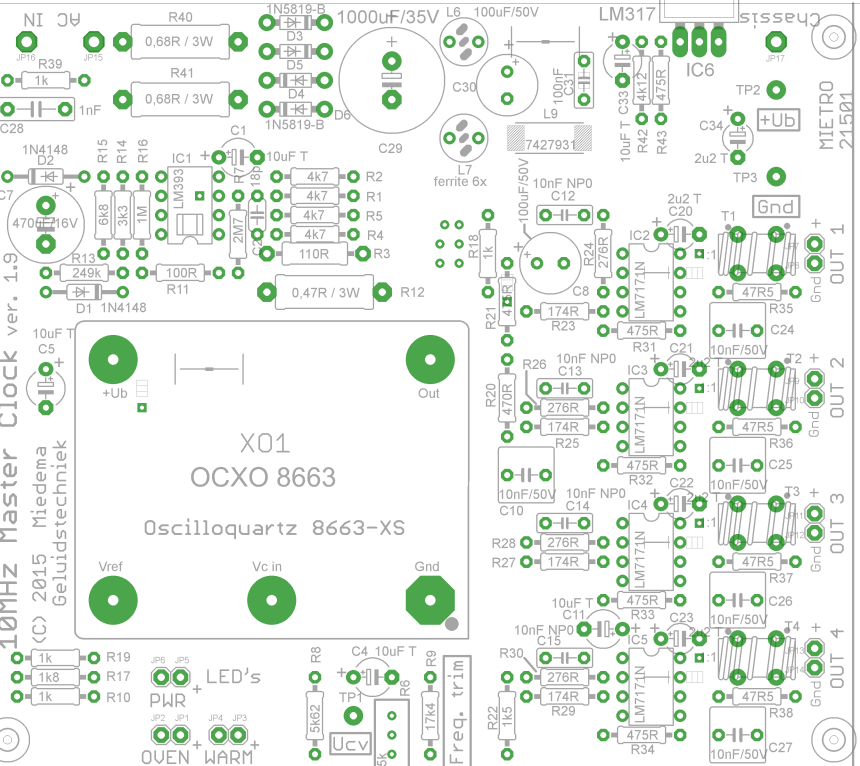
MIETRO 21501

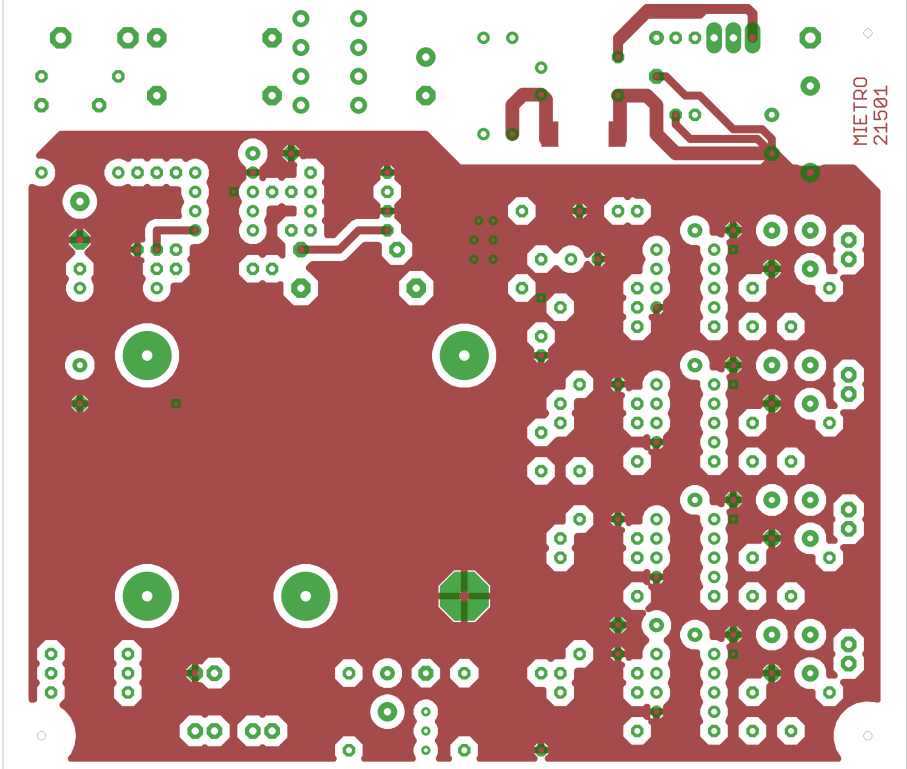
OUT 1

OUT 2

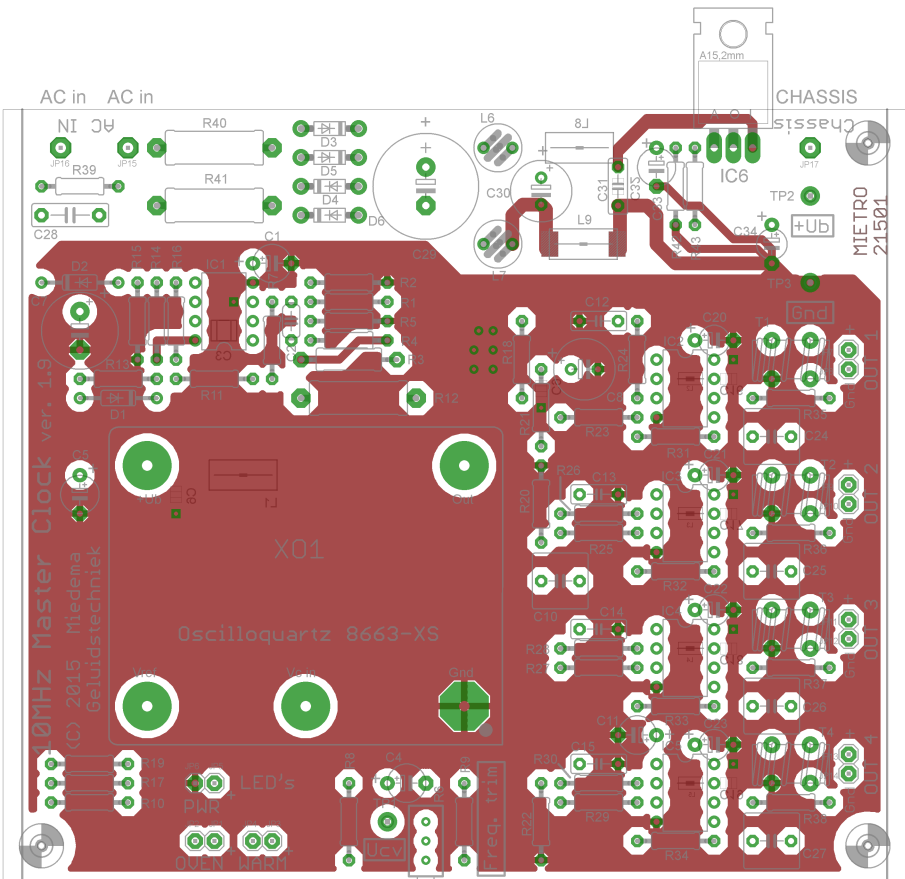
OUT 3

OUT 4





MIETRO
21501



AC in AC in

A15,2mm
CHASSIS

MIETRO
21501

10MHz Master Clock ver. 1.9
(C) 2015 Miedema
Geluidstechniek

XO1
Oscilloquartz 8663-XS

CHASSIS

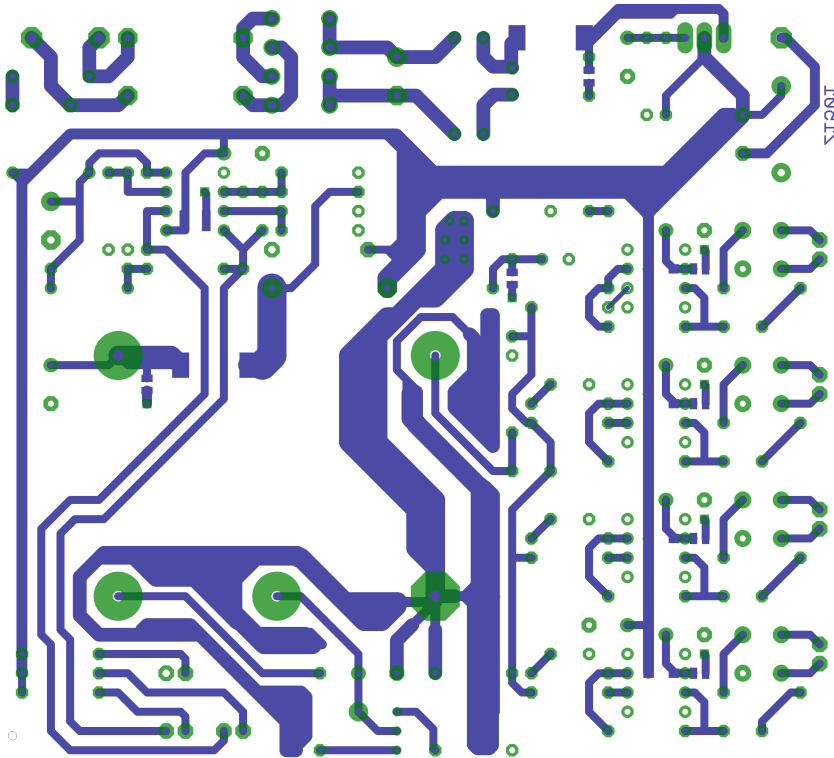
out1
gnd1

out2
gnd2

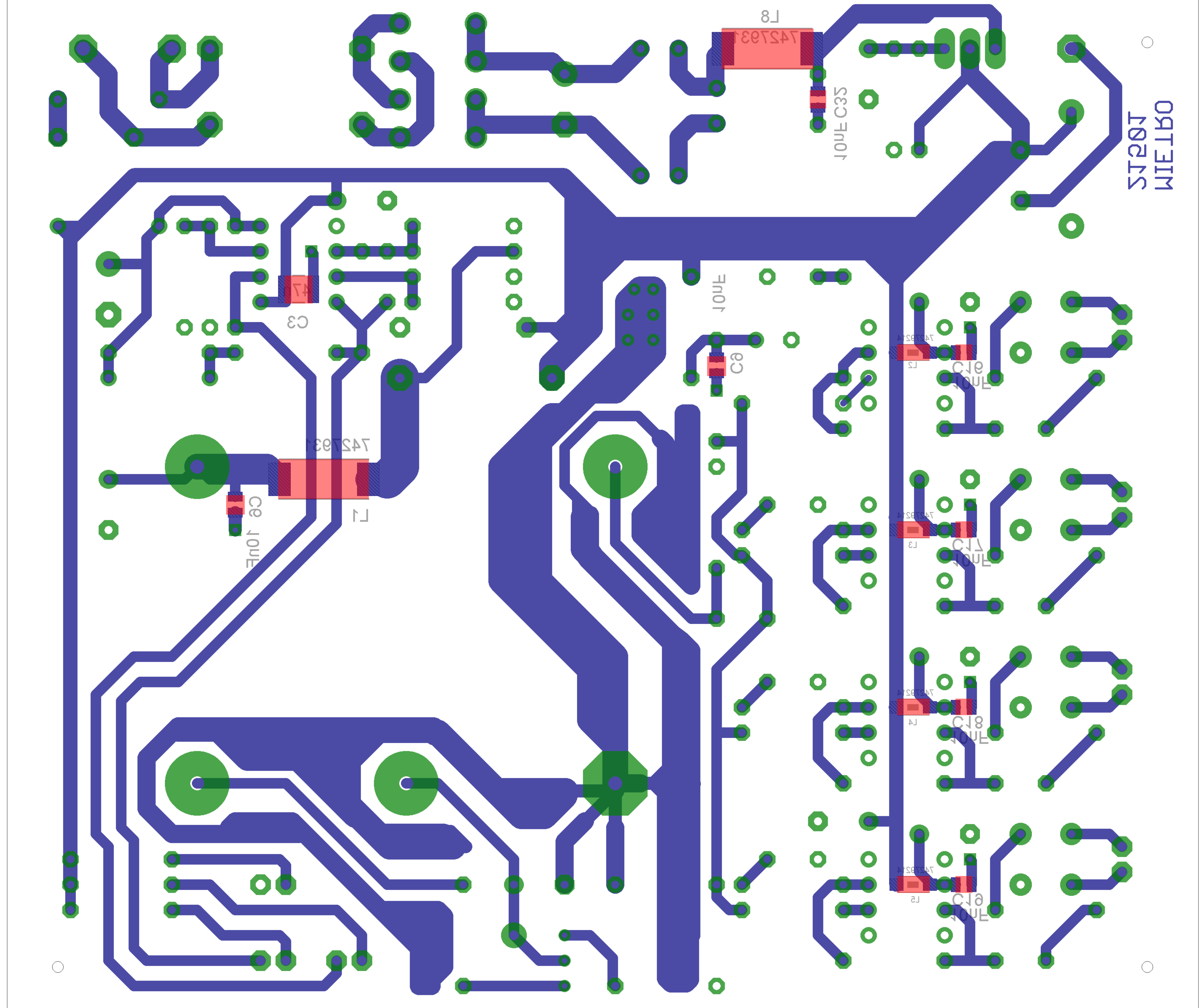
out3
gnd3

out4
gnd4

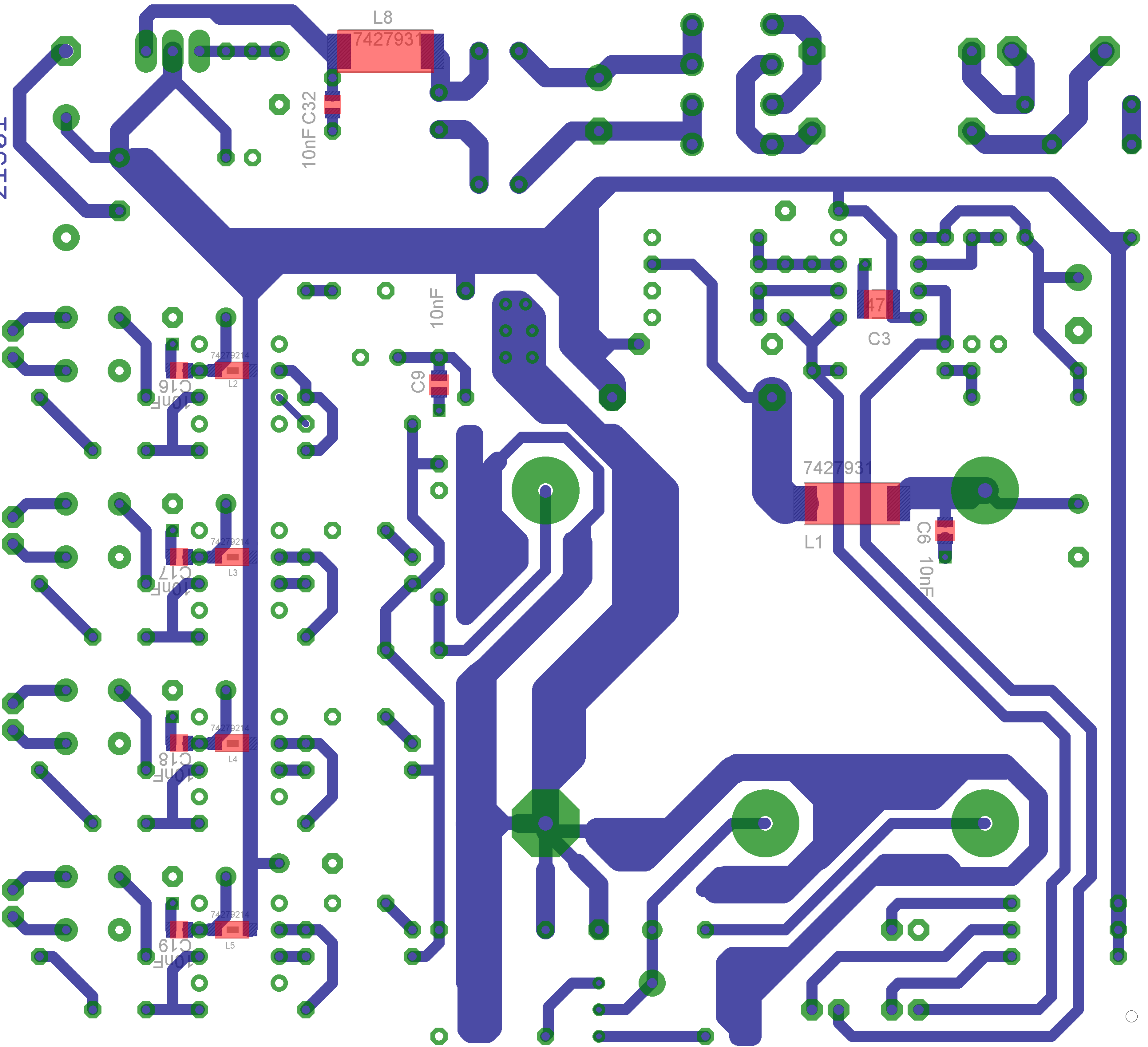
ST200T
WIE110



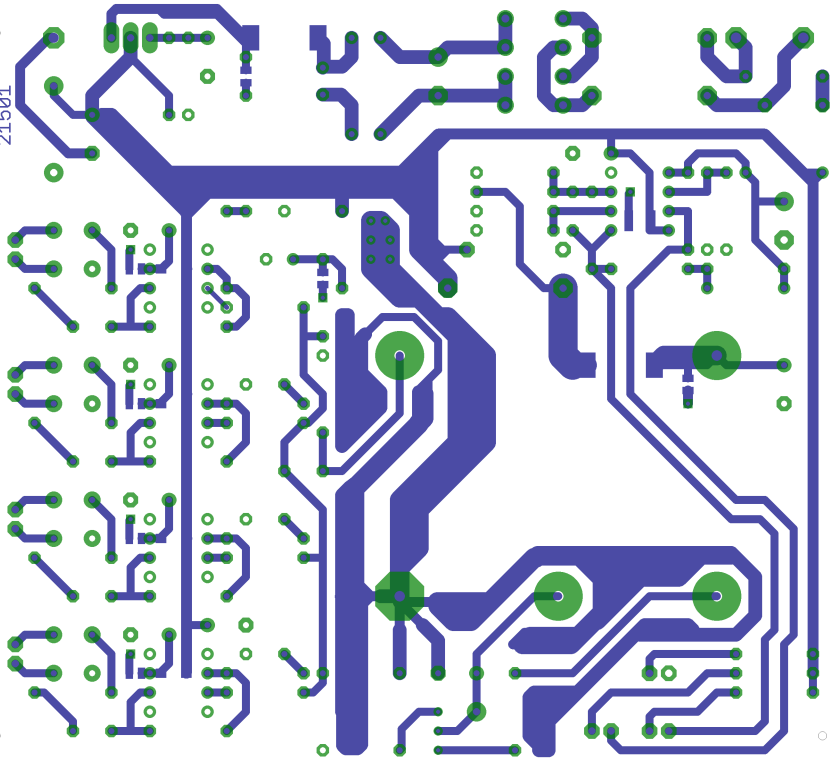
OPTIM
1020T

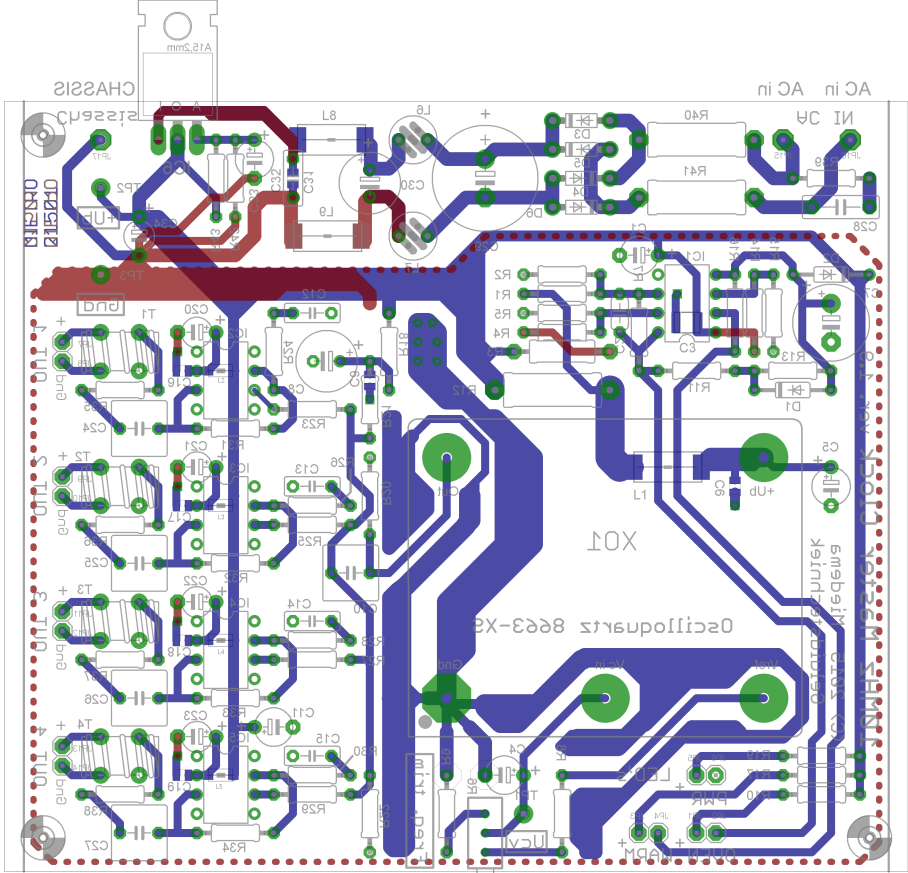


MIETRO
21501



MIETRO
21501





1.000 bnd
2.000 bnd
3.000 bnd
4.000 bnd

ni CA ni CA

CHASSIS

Oscillator 863-X2

X01

CHASSIS